

# *My Place:* Geography Focus

## Introduction

- Writing team from Serpell Primary School
- Developing a series of lessons for ***My Place*** in alignment with the ACTF and Geography Teachers Association
- Using the proposed Australian Curriculum for Geography
- Episodes and clips from ***My Place*** are used as a stimulus for lessons related to Geography
- Lessons based around three geographical perspectives:  
Place, Space and Environment
- Lessons are designed for years 3-4 and 5-6

# *My Place:* Geography Focus

## Introduction

- Years 3-4: Engaging in geographical investigations of places, environments and spatial patterns
- Years 5-6: Geographical investigation leading to involvement – interest in community, managing environmental, social and planning issues
- Will enhance Integrated Units: For example Year 3-4 will study units on *Victoria-a state of Australia* and an immigration unit: *Australians-Who Are We?*
- Also plan to utilize geography clips and activities during Maths lessons with geographical focus including Space and Measurement

# *My Place:* Geography Focus

## Mapping and Location

- Designing maps – *1938: Colum; Dole Inspector* – Guessing directions, looking for shadows in the clip to try to determine time of day, position of the sun
- Design a maze for *Colum* – make own directional instructions
- Design a map to help the boys navigate their way
  
- Investigating topographic maps – the quarry
  
- *Billycart Escape* – make a contour map
  
- Investigate the presence of laneways still in areas today
  
- Mapping the backyard with *Michaelis'* edible garden – bird's eye view
  
- *Michaelis'* use of binoculars to watch *Robin Hood* – investigate transferring smaller images into larger ones – such as maps

## Student Activity

Suggested example sheet

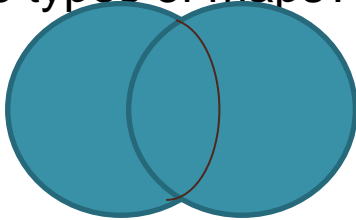
Episode : **Colum**  
**Contours**

Continuous line drawing of the 'Billycart track'  
How does your contour line differ from other class members' lines?

Street Map vs Topographic Map

What are the similarities and differences between the two types of maps?

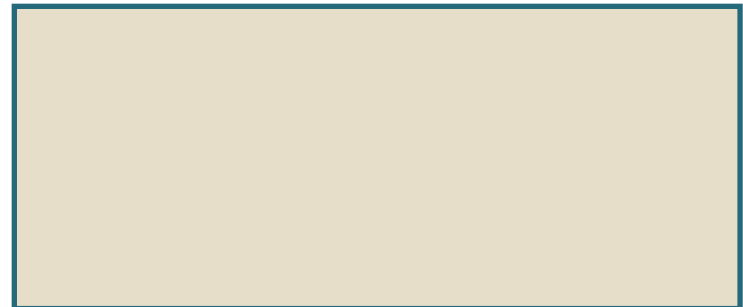
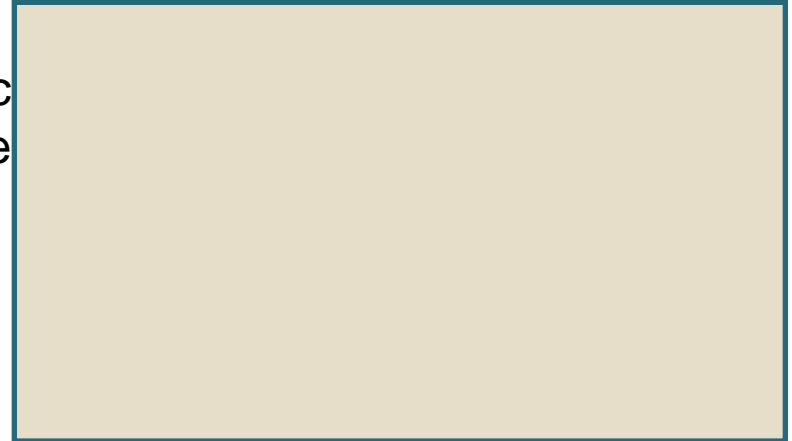
Venn Diagram



What is the purpose of a street map? What is the purpose of a topographic map?  
Who would use these types of maps?

Draw a topographic map of the quarry based on what you see in the clip:

Clip: **The Billycart Escape**  
Activity 2: **Curves and**



Student Activity

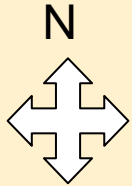
Suggested example sheet

Episode : **Colum**

Clip: 1938, Colum “Dole Inspector”  
Activity [1]: Escape from the dole inspector

Escape from the dole

inspector!  
Design a maze for Colum to escape from the Dole Inspector



Key:  
Chickens  
Big Tree  
Colum's  
house  
Start  
Exit (collect  
dole money)

Write instructions using North, South, East and West for Colum to escape from the Dole Inspector.

Make sure Colum collects all of his chickens on the way!

# *My Place:* Geography Focus

## Places and Culture

- Investigate where various characters have come from to live in Australia.
- Find them on world map, compare sizes, populations, locations, neighbouring countries, land uses, living conditions
- Overlay maps with Australia to compare
- Research immigration patterns of the past 150 years
- Compare customs, celebrations, cultural differences
- *Michaelis* watches *Robin Hood* - Investigate places around the world where tales such as this came from

Student Activity

Suggested example sheet

**Episode : 1988 Lily**

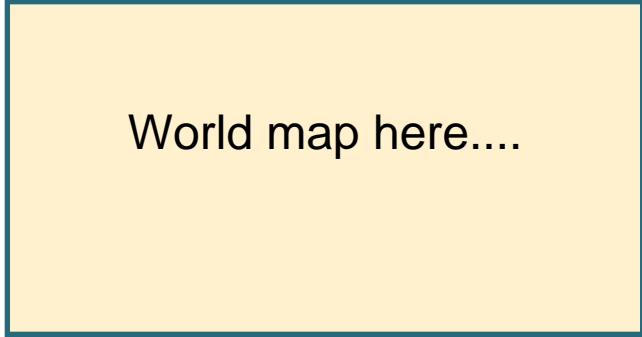
Clip: First Day

**Activity [2]: Journey to Australia**

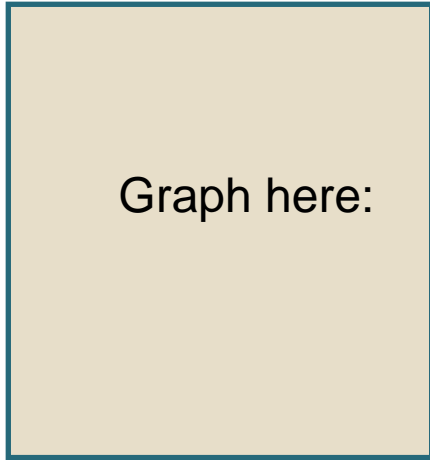
***Journey to  
Australia:***

Immigration History

1. Locate and label the countries where class members' ancestors immigrated from:



2. Using this information, tabulate and create a graph to represent how many people came from each country:



# *My Place:* Geography Focus

## Features – Natural v Man-made

- Compare man-made and natural features of the area in 1998 -*Mohammad, Discrimination*
- Investigate ways it has changed since European settlement over time (Refer to book of *My Place* as well)
- Use *Google* maps to compare own local area
- Investigate journey of *Mohammad* and *Danielle* to and from school, the features, time taken, distances. Compare with own journey to and from school



# *My Place:* Geography Focus

## Sustainability

- Indigenous use of land, catching fish
- Compare with European farming uses of the land and the impact
- Effects of mining, quarrying
- Effects of European settlement on the land
- Focus on environmental sustainability:- identify practices such as in *Rowley Re-uses, Michealis' Greek Garden*
- Compare the ecological impact of Rowley's time to today's
- What could be done at home/school?

Student Activity

Suggested example sheet

**Episode : 1858 Ben**

Clip: Plover Egg Collector

**Activity [2]: How do we use land?**

**How Do We Use**

Brainstorm: What foods occur naturally in the Australian environment?

What foods can you find in the Australian environment that are produced by man?

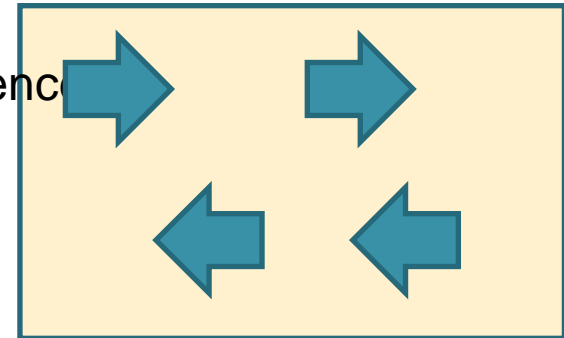
What are some of the environmental impacts on these naturally occurring resources when urban development takes place?

What are some of the environmental consequences of Ben's actions?

Di

<b>What do Australian farmers farm?</b>	<b>Where do Australian farmers farm?</b>
---	--

<b>What land features do they look for?</b>	<b>What produce do we get from around the world?</b>
---	--



ence

# *My Place:* Geography Focus

## Landforms

- 1758 – *Catching the Fish*- Make a working model to show how varying landscapes will affect the way a creek/river flows
- Investigate how the path of a river is influenced by rocks, landforms, flow
- Investigate mangrove environments
- Investigate cities that have developed along a river
- Create a map of a quarry to be re-designed as parkland

Student Activity Suggested example sheet

**Episode : 1828 Alice**

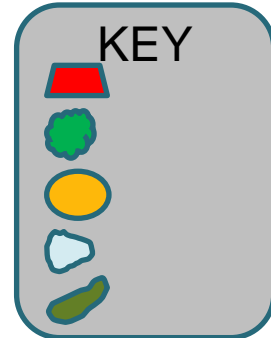
Clip: : Alice near the tree and Quarry lunch

**Activity [2]: My Quarry**

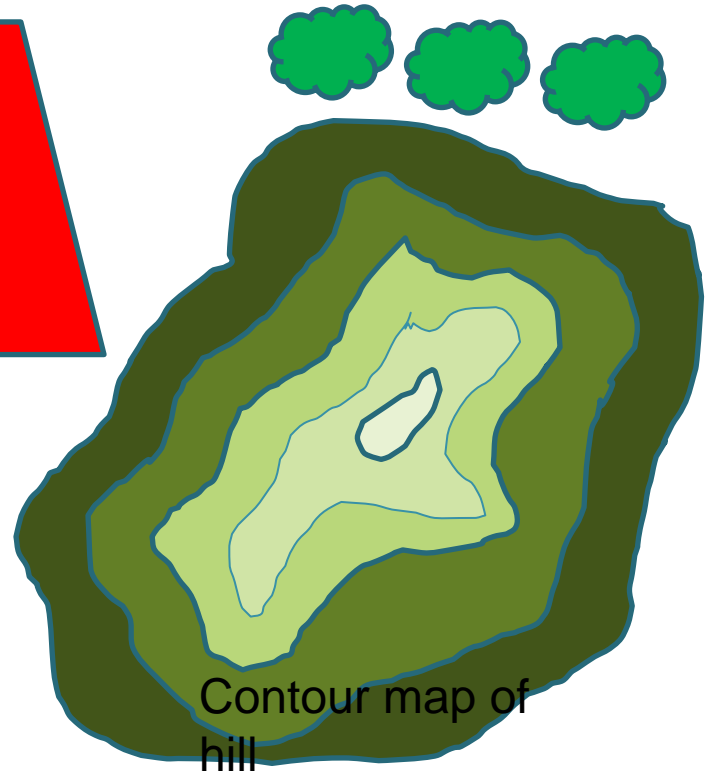
**Landscape**



Contour map of quarry



Include plants, trees,  
playgrounds



Contour map of  
hill

